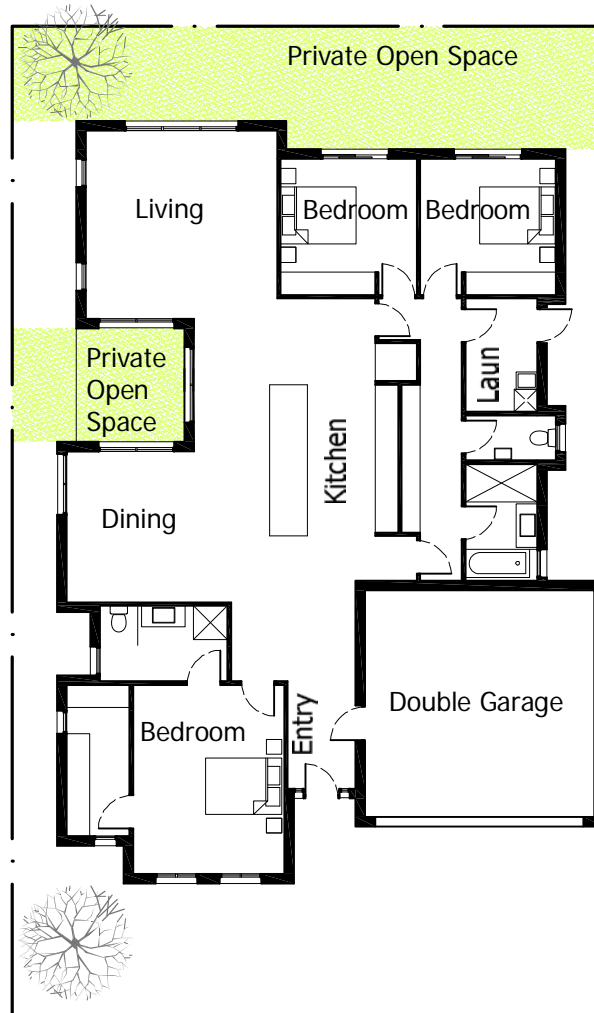


Details

3 bedrooms
202sqm floor area + double garage
75m external wall perimeter
Land size - 400sqm
Private open space - 45sqm + 13sqm

**Option A: 3 bedroom house -
example floor plan**



Street frontage

Floor Plan
1:200



Energy Cost Calculator

Based on the attached floor plans, in Melbourne, suburban site exposure, using FirstRate Energy rating software

Energy Cost Calculator

| 3 bedroom house Option A | | | | |
|---|--------------------|--------------------|-------------------|-------------------|
| 202 sqm floor area + double garage | | | | |
| Total Area (m2) | 202 | | | |
| Cost of Energy (c/kWh) | 20 | | | |
| Inflation (CPI) | 3.50% | | | |
| Energy Star Rating | 3.0 | 4.9 | 6.3 | 8.3 |
| Energy Usage (Mj/m2) | 281.2 | 160.2 | 109.7 | 45.8 |
| Energy Usage per year (Mj) | 56,802.40 | 32,360.40 | 22,159.40 | 9,251.60 |
| Total Cost of Energy for Year 1 (\$) | \$3,155.69 | \$1,797.80 | \$1,231.08 | \$513.98 |
| Total Cost of Energy for Year 2 (\$) | \$3,266.14 | \$1,860.72 | \$1,274.17 | \$531.97 |
| Total Cost of Energy for Year 3 (\$) | \$3,380.45 | \$1,925.85 | \$1,318.76 | \$550.59 |
| Total Cost of Energy for Year 4 (\$) | \$3,498.77 | \$1,993.25 | \$1,364.92 | \$569.86 |
| Total Cost of Energy for Year 5 (\$) | \$3,621.23 | \$2,063.02 | \$1,412.69 | \$589.80 |
| Total Cost of Energy for Year 6 (\$) | \$3,747.97 | \$2,135.22 | \$1,462.13 | \$610.44 |
| Total Cost of Energy for Year 7 (\$) | \$3,879.15 | \$2,209.96 | \$1,513.31 | \$631.81 |
| Total Energy over 7 years of ownership | \$24,549.39 | \$13,985.82 | \$9,577.06 | \$3,998.44 |
| Energy costs over 7 years | 100% | 57% | 39% | 16% |

